

CABLE 236 RF: HIROSE U.FL + FRONT MOUNT SMA S/T BULKHEAD JACK WITH O-RING RATED TO IP67/68 + MULTIPLE CABLE OPTIONS

SPECIFICATIONS :

- HIROSE U.FL PLUG,  
FOR  $\phi 1.37\text{MM}$  CABLE, P/N: U.FL-LP-088.  
FOR  $\phi 1.13\text{MM}$  CABLE, P/N: U.FL-LP-068.
- COAXIAL CABLE, SEE P/N OPTION FOR DETAIL.
- FRONT MOUNT SMA STRAIGHT BULKHEAD JACK WITH O-RING RATED TO IP67/68, P/N: RFCT-SMA003-F78.

ENVIRONMENTAL:

A. BULKHEAD MOUNTED CONNECTOR (RFCT-SMA003-F78) TESTED TO THE FOLLOWING SPECIFICATION:

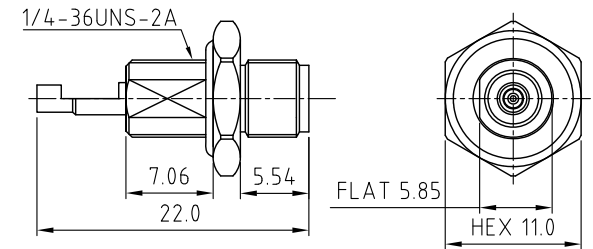
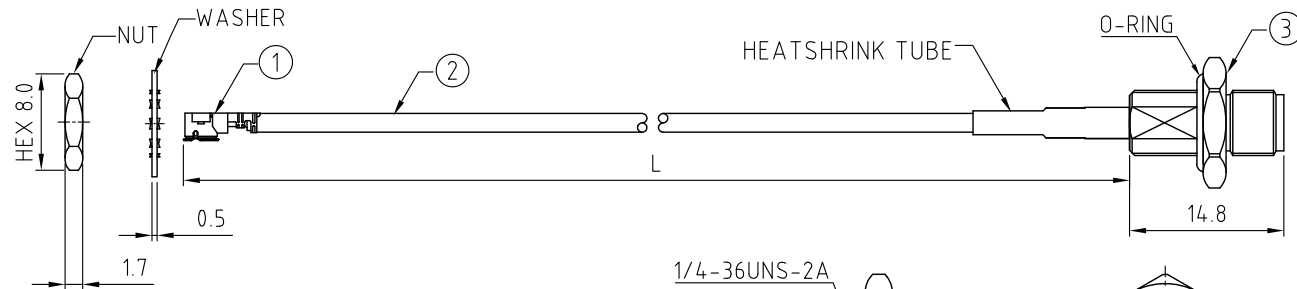
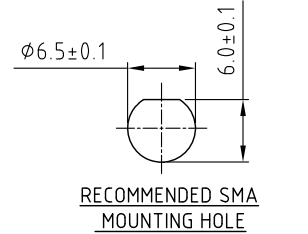
- IP6X - DUST TIGHT - NO PARTICLE INGRESS.
- IPX7 WATERPROOF FOR 30 MINUTES UP TO 1 METER UNDERWATER.
- IPX8 WATERPROOF FOR 48 HOURS AT 1 METER UNDERWATER.
- IPX8 WATERPROOF FOR 12 HOURS AT 5 METERS UNDERWATER.
- PRESSURE TEST - 1 BAR FOR 10 SECONDS.

NOTES:

- THE ORIENTATION OF CONNECTORS ON DRAWING IS FOR REFERENCE ONLY, IF THE ORDER IS LEFT BLANK THE CONNECTOR WILL NOT HAVE FIXED ORIENTATION.
- FIXED ORIENTATION IS SUGGESTED FOR CABLE LENGTH 25MM TO 100MM. PLEASE SPECIFY THE FIXED ORIENTATIONS FROM THE ORDER CODE (F1, F2, ETC)
- CONTACT GRADCONN IF THE ORIENTATION YOU REQUIRE IS NOT SHOWN.
- WORKING FREQUENCY RANGE: DC-3GHz.
- OPERATING TEMPERATURE:  $-40^{\circ}\text{C}$  TO  $+85^{\circ}\text{C}$
- IMPEDANCE: 50 OHM.
- IT IS INTENDED THAT MOUNTING OF THIS CONNECTOR IS ACHIEVED USING THE NUT AND WASHER PROVIDED. PLEASE CONTACT GRADCONN FOR ADVISE IF PLANNING TO USE A DIFFERENT METHOD OF MOUNTING.

USAGE PRECAUTIONS: CABLES USING 'MICRO' COAX ARE DELICATE:

- HANDLE WITH CARE.
- DO NOT TWIST; APPLY EXCESSIVE FORCES OR SHARP BENDS TO THE CABLE. DO NOT FORCEFULLY DEFORM WIRES.
- CONSULT CONNECTOR MANUFACTURER'S DATASHEETS FOR DETAILED NOTES ON HANDLING INSTRUCTIONS.



HOW TO ORDER

CABLE 236 RF - X X X - X X - X - X

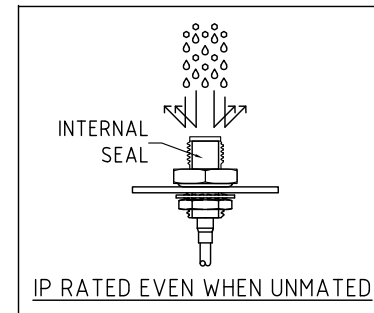
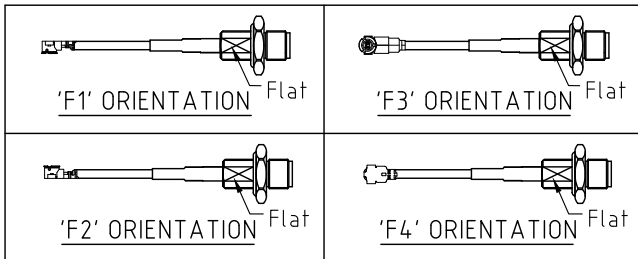
"L" LENGTH IN MM:  
eg: 100MM = 100  
(MIN. 025-MAX.400)  
STANDARD = 100, 150, 200  
Tolerance: 50-200mm:  $\pm 5\text{mm}$ .  
201-400mm:  $\pm 7\text{mm}$ .

CABLE SIZE OPTIONS:  
1 =  $\phi 1.37\text{MM}$  CABLE, COLOR: BLACK  
2 =  $\phi 1.13\text{MM}$  CABLE, COLOR: GRAY

WASHER AND NUT OPTIONS:  
BLANK = SEPARATELY PACKED (STANDARD)  
A = ALL ASSEMBLED WITH CONNECTOR

ORIENTATION OPTIONS:

- BLANK = DOES NOT HAVE A FIXED ORIENTATION  
F1 = U.FL CONNECTION DOWN (L=25-200MM)  
F2 = U.FL CONNECTION UP (L=25-200MM)  
F3 = U.FL CONNECTION AND D FLAT SAME ORIENTATION (L=25-200MM)  
F4 = U.FL CONNECTION AND D FLAT OPPOSITE ORIENTATION (L=25-200MM)  
(SEE NOTES 1, 2, 3 AND DIAGRAMS FOR MORE INFORMATION)



REV. DATE & DRN  
10 20/06/16 - NYM RELEASE  
11 07/07/17 - NYM RELEASE  
12 08/07/17 - NYM RELEASE  
13 24/03/21 - NYM ADD F3, F4 ORIENTATION. ADD NOTE 3, 6  
14 09/05/24 - CC ADD IP RATING VIEW

Scale: NTS	THIRD ANGLE	Unstated Tolerances: .X N/A .XX N/A .XXX N/A ANGLES N/A
Drawn: CC		
App'd: XXX	Title CABLE ASSEMBLY	
Date: 3 MAR '24	Revision: 1.4	Unit: mm



IP Rated RF Products  
www.gradconn.com  
© THIS DRAWING IS CONFIDENTIAL AND MUST NOT BE COPIED OR DISCLOSED WITHOUT WRITTEN CONSENT

Type: Cable 236 RF
CABLE 236 RF
Drawing Number:
Sheet 1 of 1
Drawing © E and O E